

Activities for kids

Time

4+



TIME FLIES

The world is split up into areas known as 'time zones' that are mostly an hour apart. This map shows the time zones in parts of Europe, Africa and Asia. Each zone is one hour ahead of the zone to its west, and one hour behind the zone to its east. Use the key at the bottom of the pages to help you solve the puzzles.



The white lines show approximate borders between countries.

What's the time?

If it's 8pm in Juba, what time is it in the places below? Find them on the map, then add minute and hour hands to each clock face.



Kiev

Astana



Nha Trang

Muscat



Bamako

Mumbai

Countries that are yellow are one hour ahead of countries that are orange.

My flight from Marrakesh to Juba takes off at 11am and lasts 7 hours. What time will it be in Juba when I land?

If I take off from Karachi at 6pm and arrive in Seoul after an 11 hour flight, what time will it be in Seoul?

Where do Trans-Siberian trains go back in time by one time zone when they're going east?

This track shows part of the route of the Trans-Siberian Railway. All the clocks at its stations in Russia are set to the time in Moscow, even if they're in different time zones.

My train just pulled up in the Russian city of Irkutsk, where the station clock shows 8pm. A hotel nearby doesn't accept new guests past 11pm (Irkutsk time). Will I be able to spend the night there?

YES/NO

TIME ZONE KEY:

0

1

2

3

4

5

6

7

8

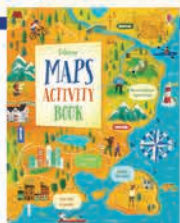
9

10

Usborne Activities

Find similar activities in **Maps Activity Book**

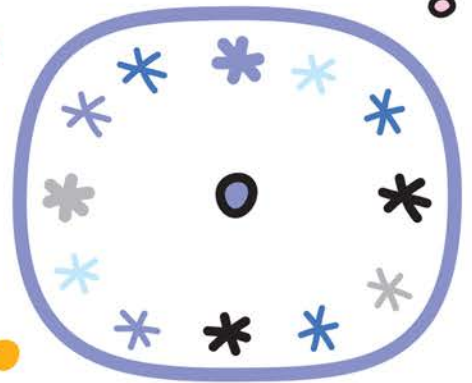
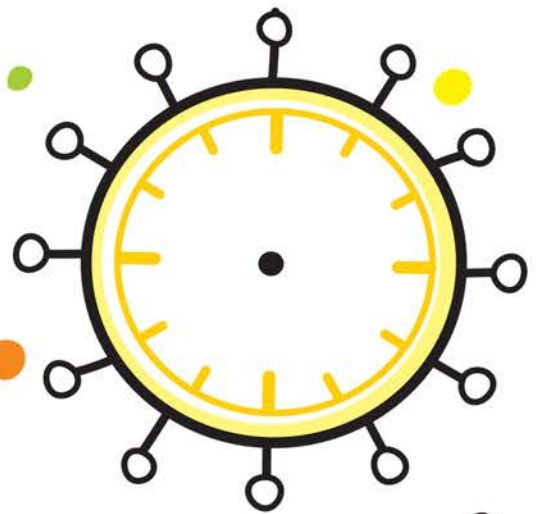
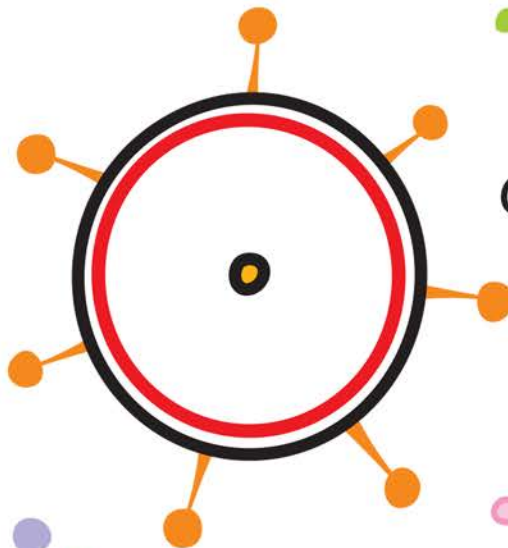
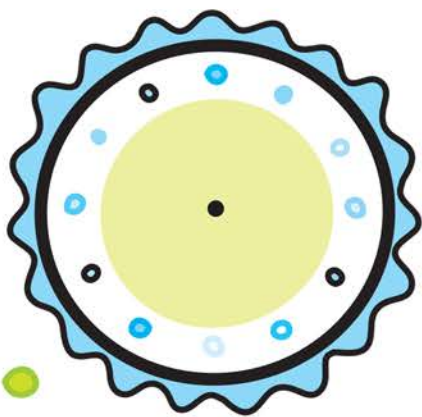
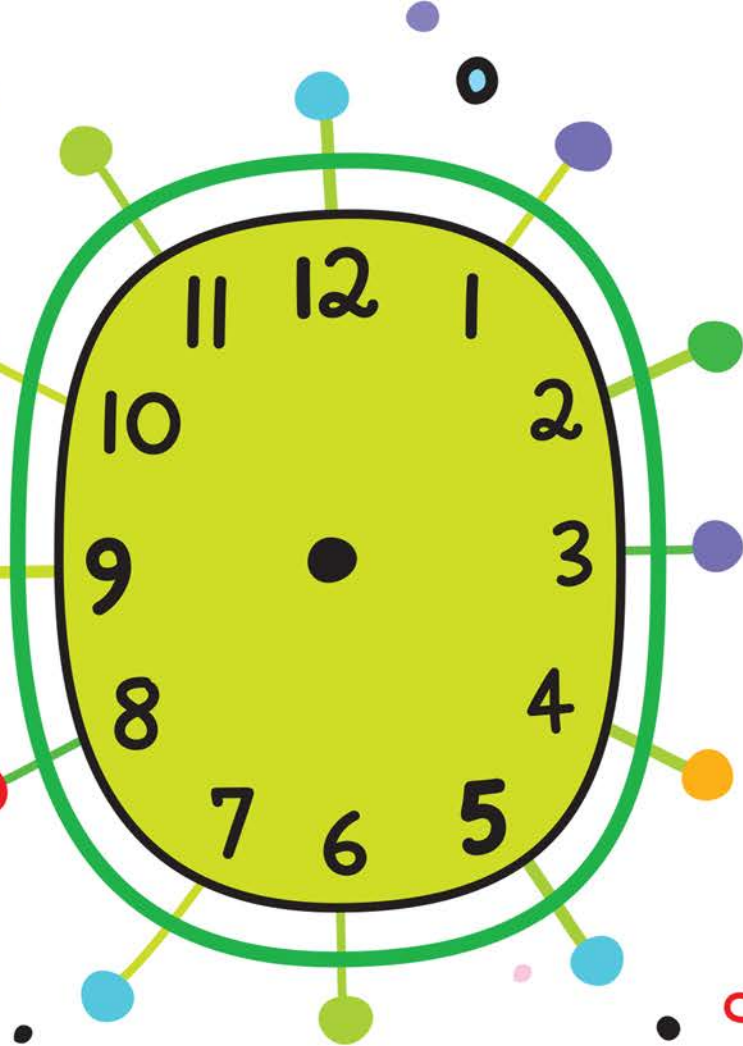
Illustrations by Peter Donnelly, Various
Copyright © Usborne Publishing Limited, 2025.



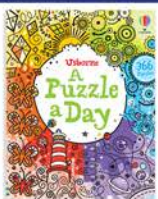
What's the time?
Kiev - 7pm, Astana - 11pm, Nha Trang - Midnight, Muscat - 8pm, Bamako - 5pm, Mumbai - 10:30pm
The flight from Marrakesh to Juba lands at 8pm.
The flight from Karachi to Seoul lands at 9pm.
No, it's too late for the passenger to stay in the hotel, because it's 11pm in Irkutsk.



Ellie's alarm clock gains ten minutes every hour. Exactly one hour ago it stopped working completely, showing the time as 7:50. Ellie knows she set it at the right time at 5:30. What is the correct time now? Draw it on the green clock.



You can use these old clocks to work out your answer.



On the hour or 'o'clock'

An 'o'clock' time is when the big hand points to 12, and the little hand points to an hour number.



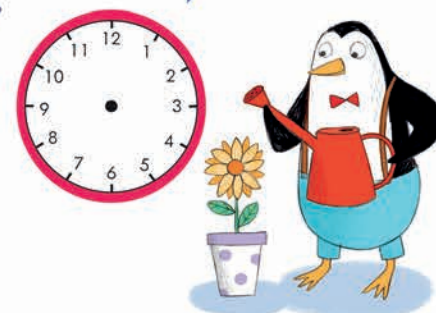
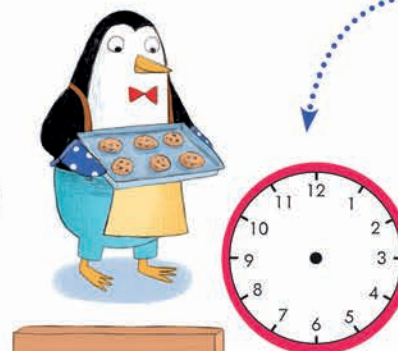
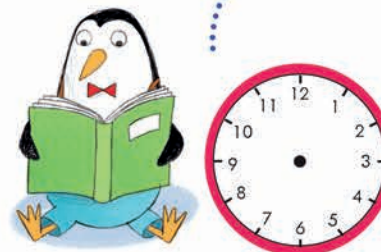
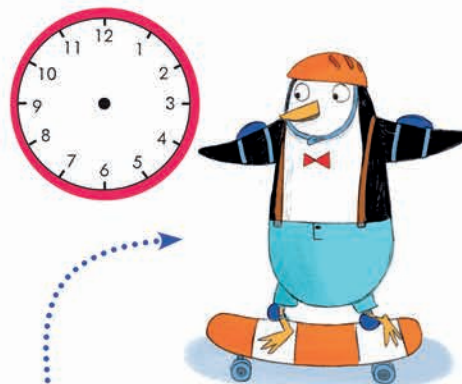
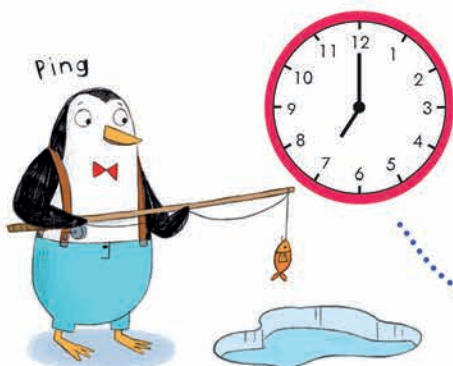
The little hand moves around the clock in the direction of this arrow, which is called 'clockwise'.

The little hand takes an hour to move from one number to the next.



Ping is out fishing at 7 o'clock in the morning. Every hour, he starts a different activity. Trace the order of Ping's day and draw the hands on the clock one hour later for each activity.

Ping



Tomorrow, Ping will start a different activity every two hours. He will start playing the guitar at 9 o'clock in the morning. Draw the new time on the clock.

Trace Ping's path again and write the time two hours later on each clock.



Usborne Activities

Find similar activities in **Wipe-Clean Telling the Time**

Illustrations by Kimberley Scott
Copyright © Usborne Publishing Limited, 2025.



Telling the time



Look at the images of Poppy and Sam's busy day and add the hands to the clocks underneath.

It's quarter past seven in the morning. Poppy is brushing her teeth.



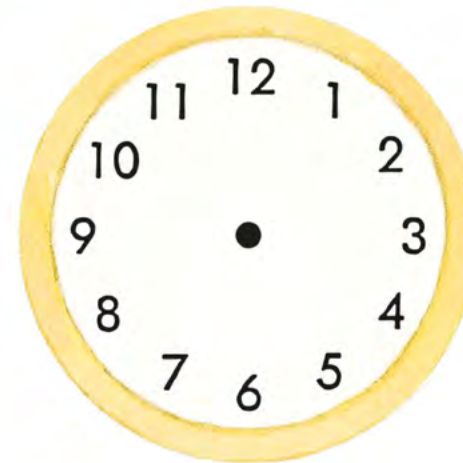
It's quarter to two. Mrs. Boot and Sam are filling the cows' water trough.



It's half past four. Poppy and Sam are at the station to meet Mr. Boot.

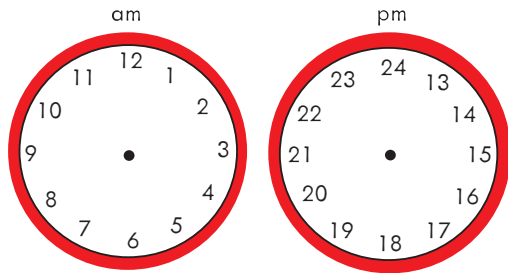


It's half past six – time for a bedtime story.



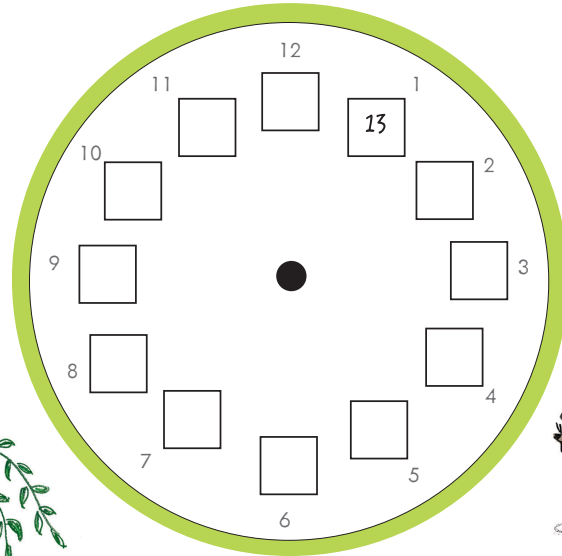
24-hour clock

The mice have written out all 24 hours on two clocks – one clock for the first half of the day (am), and one for the second half of the day (pm).



Could we show all 24 hours on one clock?

Help Cody finish copying the hours from 13 to 24 into the boxes on the clock below. Now draw hands to show a time.



Hmm. I still can't tell if that's an 'am' time or a 'pm' time.

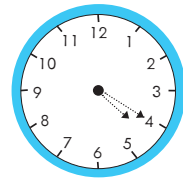
Digital clocks tell the time using all 24 hours, so you always know if it is an 'am' or a 'pm' time.

hour minutes past

14:00



This clock says it is exactly 2pm, or 2 o'clock in the afternoon.

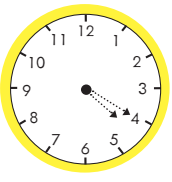


am

04:20



It's four twenty am, or twenty minutes past four in the morning.



pm

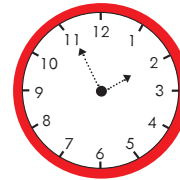
16:20

It's four twenty pm, or twenty minutes past four in the afternoon.

Underneath each analogue clock below, write the 'am' time as it would appear on a digital clock.

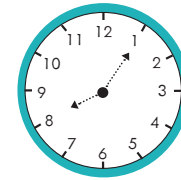


Remember, digital clocks show the minutes PAST the hour, not the minutes to.



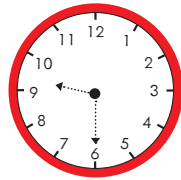
:

.....



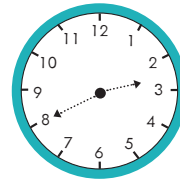
:

.....



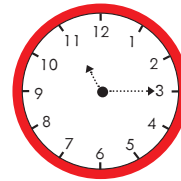
:

.....



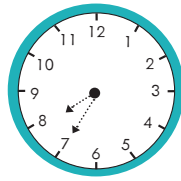
:

.....



:

.....



:

.....



Now write the 'pm' time for each clock above, as it would appear on a digital clock. You could use the clocks on the opposite page to help you.

Usborne Activities

Find more like this in **Key Skills Wipe-Clean Books** • Share your activities on Instagram [#UsborneActivities](#) • [usborne.com/playandlearn](#)



Minutes past the hour

The little hand on a clock measures the hours. The big hand measures how far through the hour it is.

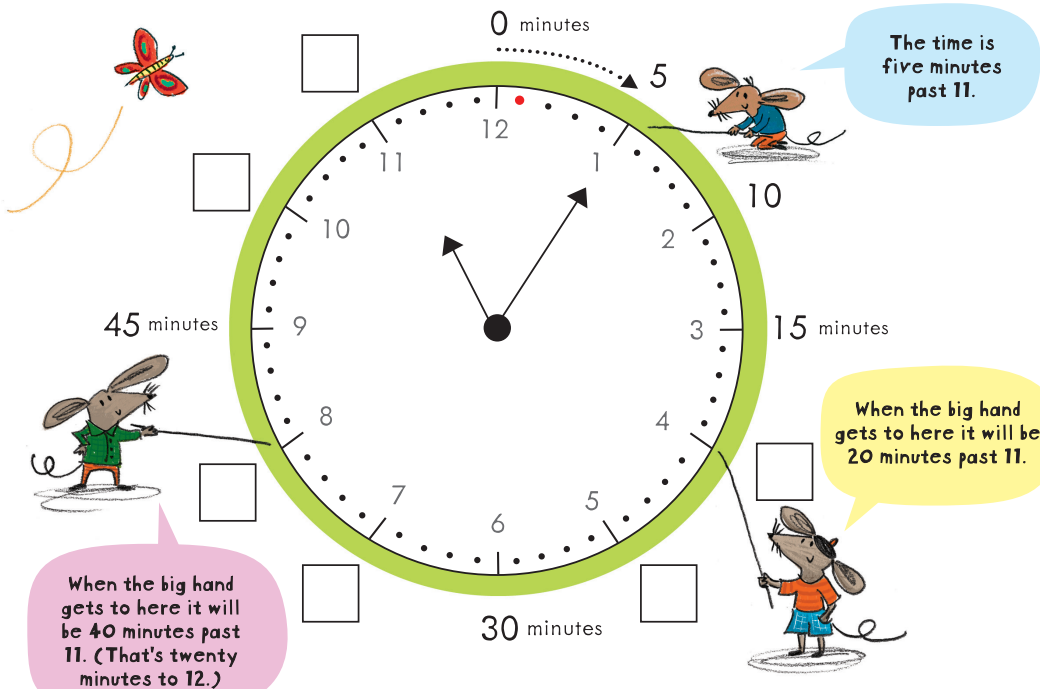
You can describe how far through the hour it is in fractions, e.g. 'a quarter past', 'half past', 'a quarter to'.

Or, you can describe how far through the hour it is in minutes, e.g. 'ten past', 'twenty-five past', 'twenty to'.

Clocks with hands and faces are called analogue clocks.



This analogue clock shows all 60 minutes in an hour. You count the minutes from the red dot clockwise (the direction of the arrow). Finish writing the numbers around the clock for the mice.



You can show the time in hours and minutes using a colon (:).

The hour number is shown first, then a colon, then the number of minutes PAST the hour.

(Numbers under 10 have a '0' in front of them.)

hour minutes past
11:05
↑
colon

The time is five minutes past 11.

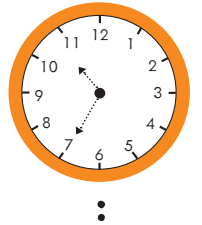
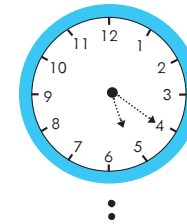
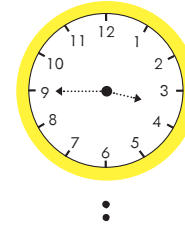
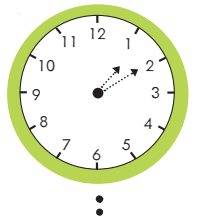
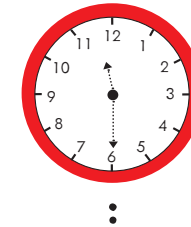


Use the big clock on the opposite page to help Suki write the time in hours and minutes below each of these clocks.

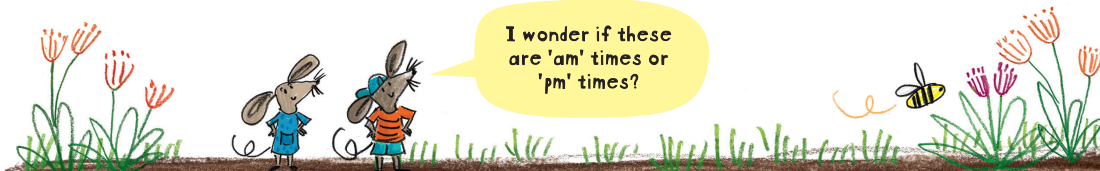
Remember, you can only write the minutes PAST the hour using a colon.

Suki

Start by looking at the hour number the little hand has moved past.



I wonder if these are 'am' times or 'pm' times?



Usborne Activities

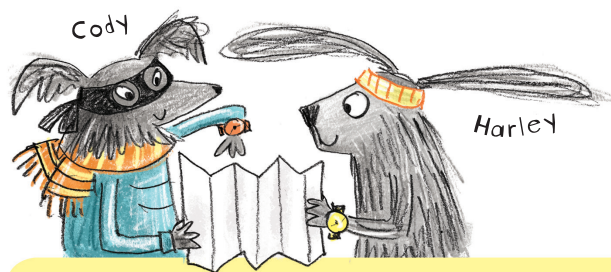
Find more like this in Key Skills Wipe-Clean Books • Share your activities on Instagram #UsborneActivities • usborne.com/playandlearn



Reading a timetable

Cody and Harley are planning journeys using their local bus timetable below.

Route 65 – Free Forest to Hopping Common								
	Monday-Friday				Saturdays		Sundays	
Free Forest	0730	1120	1545	1905	1003	1749	1228	1455
Pine Avenue	0805	1155	1620	1940	1038	1824	1357	1525
Windmill Way	0825	1215		2000		1844	1423	1545
Cedarwood School	0850		1708	2025		1909	1448	1610
Hopping Common	0855	1242	1713	2030	1115	1914	1453	1615



Timetables usually use '24-hour time' and don't include colons.



How to read a timetable

Find the name of the place you are leaving from e.g. Pine Avenue. Read along the row to see all the times the bus will stop there in the day. Find the time you want to get on the bus, e.g. 1155.

Pine Avenue	0730	1155
-------------	------	------

Now read down the times in that column until you get to the row of your destination, e.g. Windmill Way. This is the time the bus will arrive there: 1215.

Windmill Way	0825	1215
--------------	------	------

A line instead of a time means the bus will pass through this place without stopping.

Cedarwood School	0850	
------------------	------	--

What time is the last bus from Free Forest to Windmill Way on Saturdays? Write the time on the dotted line, using a colon.

Write the time the first bus arrives at Hopping Common on Sundays.



Cody and Harley want to get the bus at 12:15 from Windmill Way to Hopping Common on Wednesday.

What time will they will arrive at Hopping Common? Write the time on the dotted line.

Dilly wants to meet them at half past five. She will be travelling from Free Forest. When should she get the bus to make sure she arrives in time?



I wonder how long the bus will take on a Wednesday?

I don't think it's very far from Windmill Way to Hopping Common.

Duration is the length of time something lasts, takes, or carries on for.

Write the duration of Cody and Harley's journey below.

.....

Write the duration of Dilly's journey below.

.....



Usborne Activities

Find more like this in **Key Skills Wipe-Clean Books** • Share your activities on Instagram [#UsborneActivities](#) • [usborne.com/playandlearn](#)