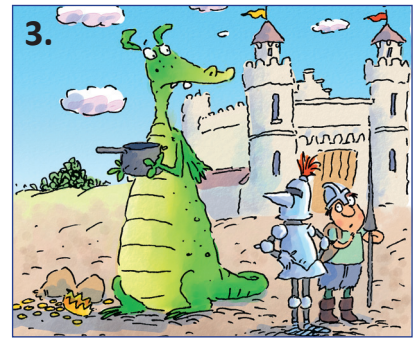
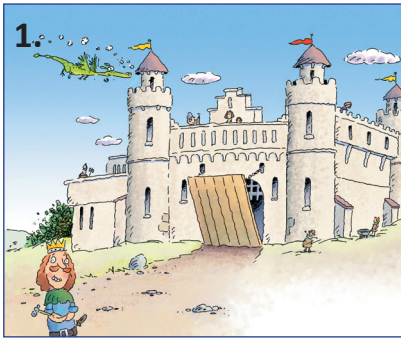


## The Castle That Jack Built • Worksheet answers

1. Circle the character you *can't* see in each picture below.



A. Jack, dragon, witch.

B. Witch, troll, dragon.

C. Jack, dragon, frog.

2. Put the parts of the sentence in the right order, numbering them from 1 to 6.

A. This is the witch 1

B. that Jack built. 6

C. who stole the gold 4

D. that followed the dragon 3

E. that sat in the castle 5

F. who sat in the wagon 2



3. Match each word in line A with the word it describes in line B.

A. scritch      silver      grumpy      golden

B. gown      frown      crown      itch

4. Choose between *who* and *that* to complete these sentences.

A. This is the dragon ..... who ..... stole the gold ..... that ..... sat in the castle  
 ..... that ..... Jack built.

B. This is the wagon ..... that ..... followed the dragon.

C. This is the girl ..... who ..... kissed the frog.

Do you know, or can you tell, when you should use *who* and when you should use *that*?

5. Circle the two words that have swapped places in each sentence.

A. His son is the girl who came to town and kissed the prince in the silver gown.

B. And they all built happily ever after, safe the castle that Jack lived.