

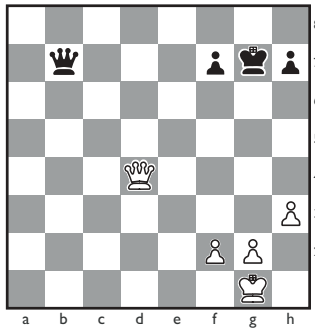


Usborne Chess Puzzles – level 1

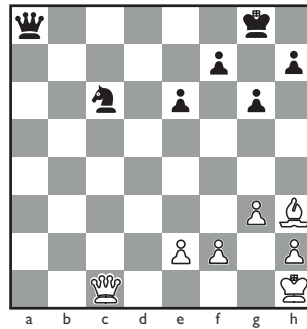
To print out these puzzles, click on 'File' and then 'Print' in the menu at the top of your browser.

Puzzles 11–20

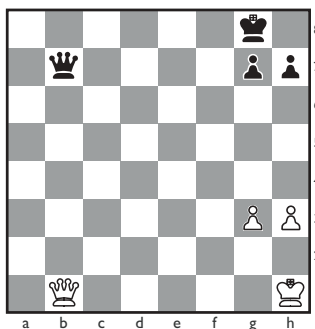
You may find it helps to set up the positions on a chess board. For the answers, go to Usborne Quicklinks and type the keywords “complete chess”.



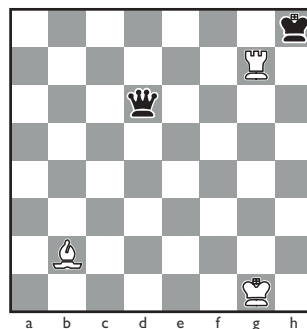
11. The white Queen has put the black King in check again. There is a way for Black to stop the check without moving the King – how?



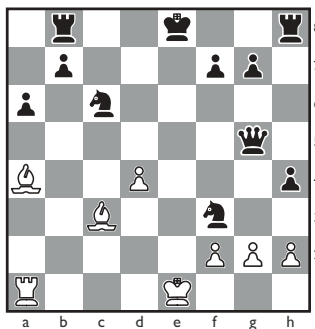
16. How can White make a move that pins Black's Knight to its Queen?



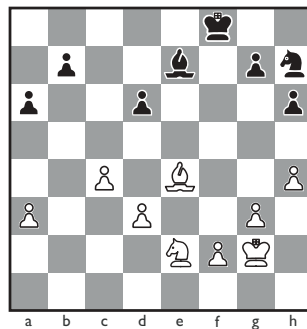
12. This time, the black Queen has White in check. How can White escape the check without moving its King?



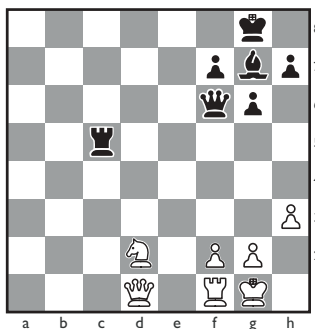
17. How can White move to give discovered check to the black King?



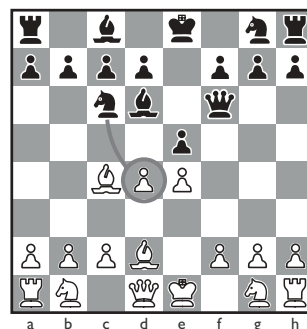
13. Who can castle – Black or White? Can they castle Kingside or Queenside?



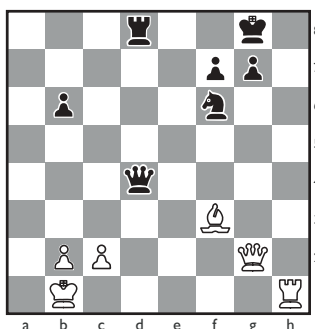
18. Which pieces can the white Bishop safely capture? Which pieces can the black Bishop safely capture?



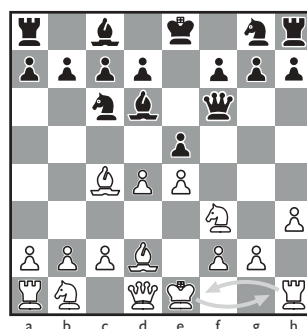
14. White can move a piece to set up a fork – can you see how?



19. How would you write down this move using algebraic notation?



15. What move can White make to set up a skewer attack here?



20. How would you write down this move using algebraic notation?