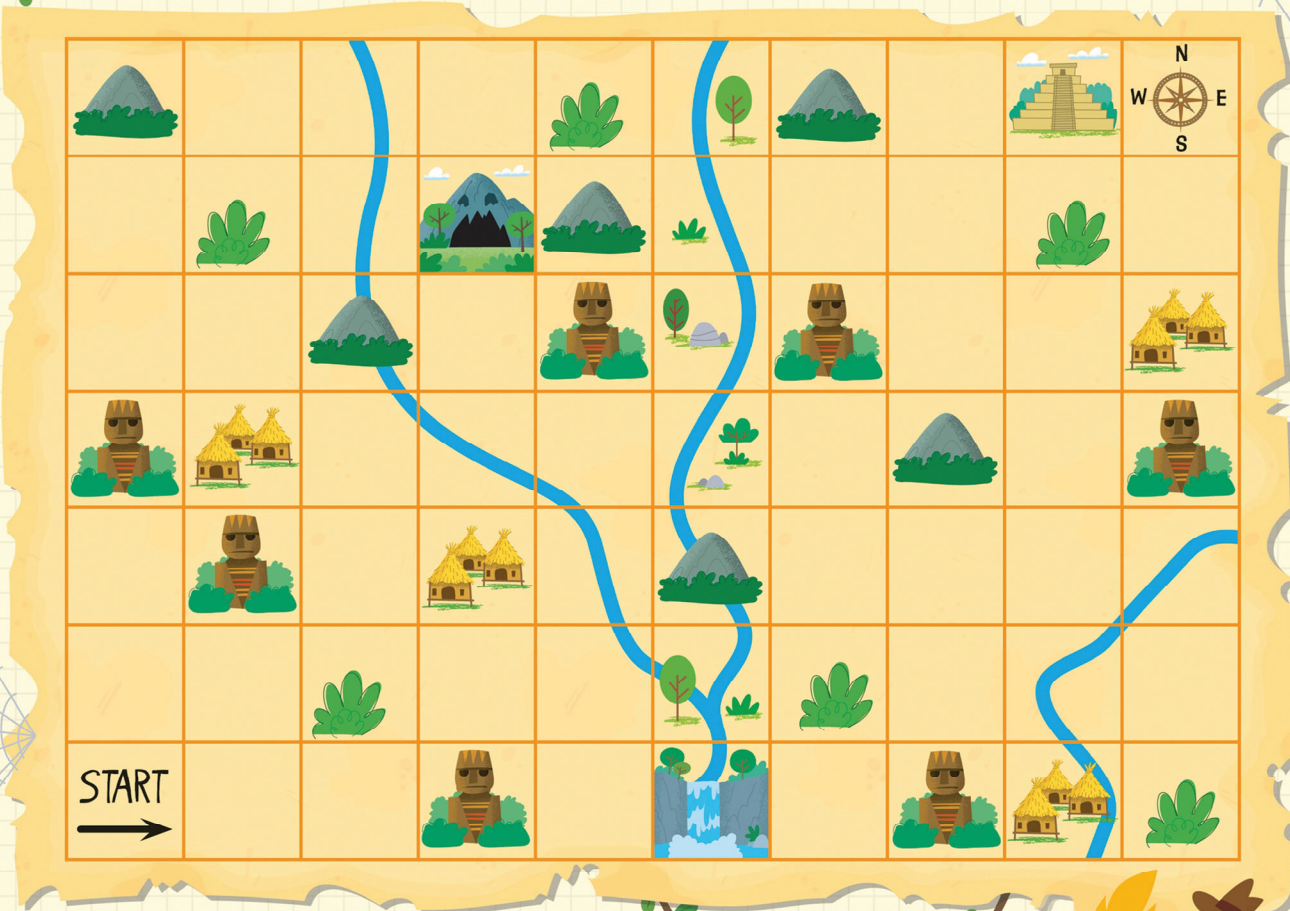


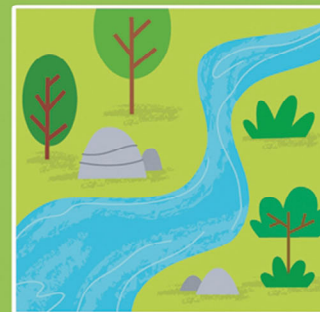
Treasure hunter

This map will guide you to a crystal box that's said to contain the soul of a legendary warrior. Look at the key to find out what to do at certain map symbols.



Key

Follow rivers south.



Go east at mountains.



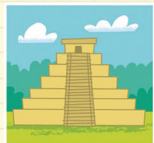
Go north at stone statues.



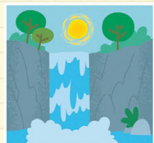
Go west at villages.



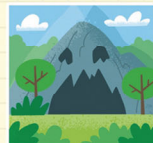
Circle the location below where you find the crystal box:



Within the temple



Under the waterfall



Inside the cave