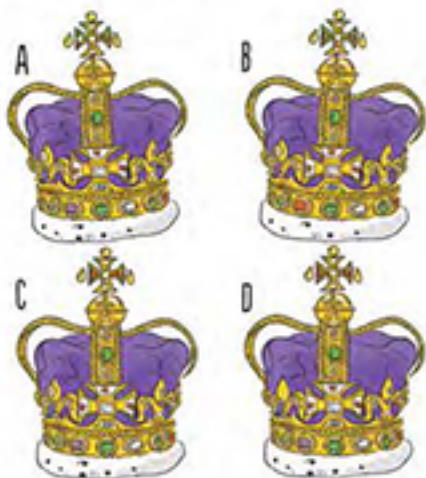


TOWER OF LONDON

This castle was built nearly 1,000 years ago on the bank of the River Thames.

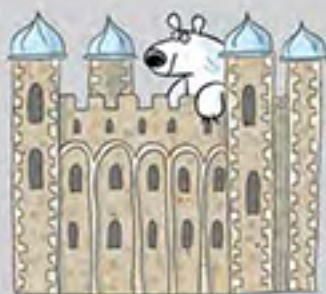
Crown Jewels

Precious jewels that used to belong to the Royal Family are kept safe at the Tower of London. Here is a picture of one of the crowns. Can you find it among these fakes?



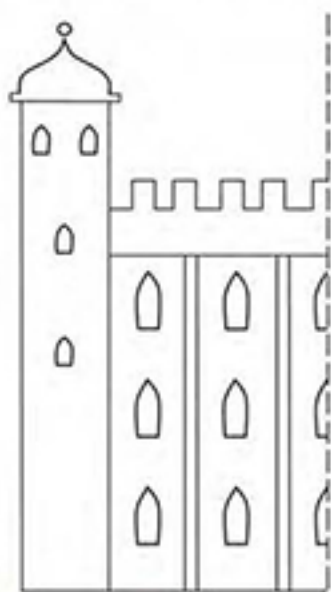
Did you know?

Lots of wild animals used to live at the Tower – including a polar bear who liked to swim in the River Thames.



The White Tower

This castle keep is the oldest part of the Tower of London. Draw the other half of it, then fill it in.



Beefeaters

Beefeaters are tower guards. Can you spot eight differences between these two? Draw around them.



Usborne Activities

Find more like this in the **Usborne London Activity Book**