

Count up in threes as you join the dots to complete this cable car.



Can you find five differences between these two cable cars?



Guide Simon down a clear path to the finish.

SIMON



CAN YOU SPOT?

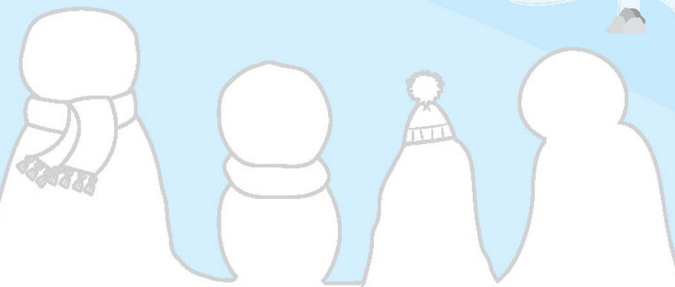
- A speeding sled
- A Christmas tree
- Three penguins
- Two snowboards



Circle the chalet design that has been built only once.



Write numbers in the empty snowballs so that the number on each snowball is the sum of the two beneath it.



Decorate the snowmen, giving them faces, hats, scarves and buttons.



Usborne Activities

Find more like this in **Big Puzzle Pad**. Find more activities at usborne.com/activities-for-kids

