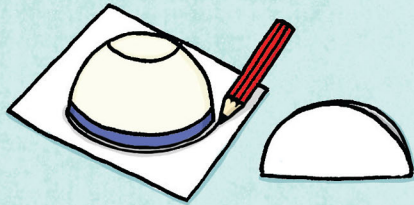


IT'S SNOWING

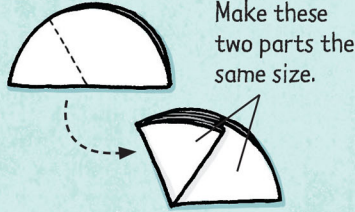
It's so magical when it snows. On these pages, you can make your own snowflakes and solve some snowy puzzles.

Stunning snowflakes

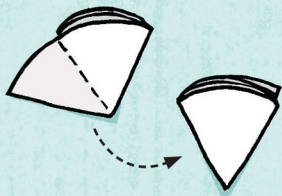
To make a six-pointed paper snowflake, you just need a piece of paper, a bowl, a pencil and a pair of scissors.



1. Draw around a small bowl on paper. Then, cut out the circle and fold it in half.

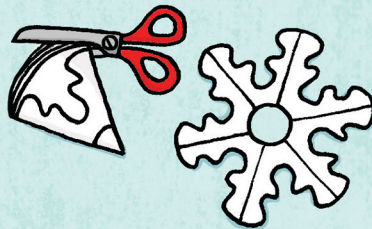


2. Fold over one third of the half circle, so that the edges line up.



3. Turn the paper over. Fold over the half on the left, so that all the edges line up.

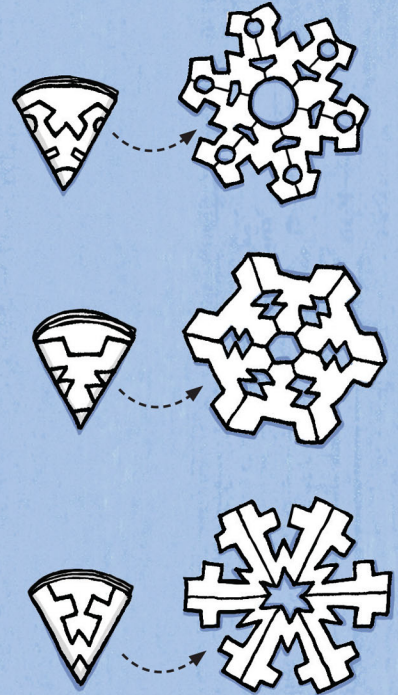
TIP: If the edges aren't lining up, redo step 2 and adjust the fold.



4. Draw these shapes, then cut them out. Unfold the paper to reveal a snowflake.

SNOWFLAKE SHAPES

To make more snowflakes, cut out these shapes:



Fun with flakes

Draw the missing parts of these snowflakes.

