

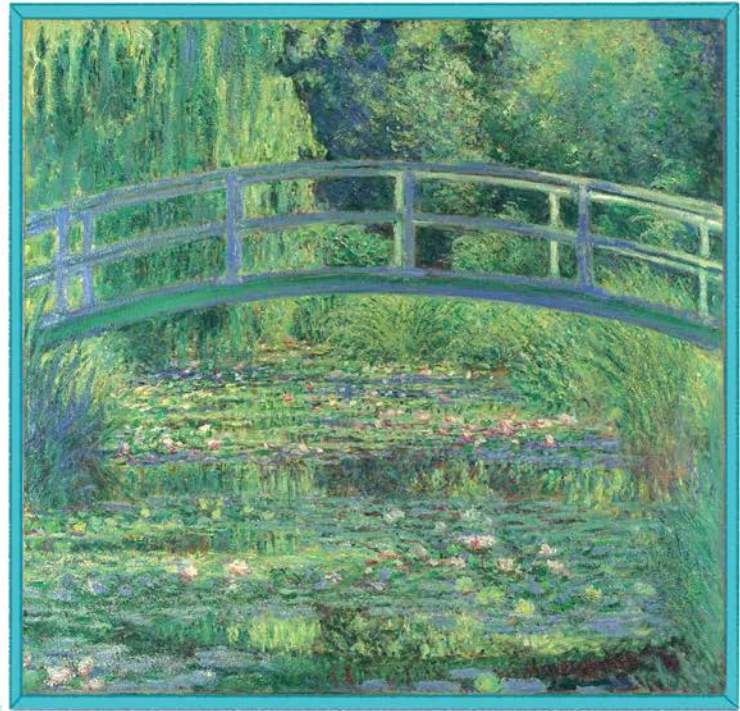
Add colourful flowers for Monet to paint.



Unjumble the names of the flowers growing in Monet's garden.



Can you find a lily with five petals?



The Water-Lily Pond
by Claude Monet, 1899

Monet's garden

Claude Monet spent years creating a beautiful garden to paint at his home in Giverny, France. This painting shows a bridge over a huge pond that he dug and filled with water lilies.

Monet used quick smudgy strokes to capture the effects of sunlight. Colour the lily pads and the water with smudgy greens and blues.