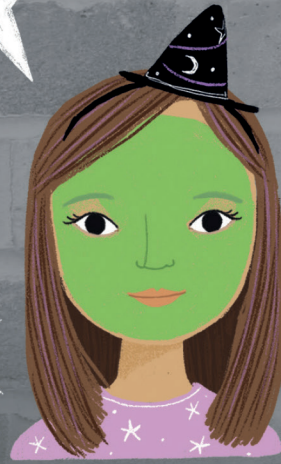




1 Sponge green over the face, leaving the lips and the area between the eyes and eyebrows. If the green is see-through, mix in a little white. Let it dry.



2 Sponge purple above the eyes. Paint the lips purple. Don't go over the green in case it blends to brown. If it does, wait for it to dry, then try again.

3 Use a fine brush to paint a black curve along each eyebrow. Add up-curving lines. Use the brush point to dab dots on the nose.



You'll need these colours.



4 Use a fine brush to paint a black vertical line from the eye down to the cheek. Add curved lines from the nose across the opposite cheek, like this.

5 Use a fine brush to paint a black circle at the end of the vertical line. Add eight legs. Between the curved lines, add small curves to make a web.