

# SATURDAY ACTIVITIES

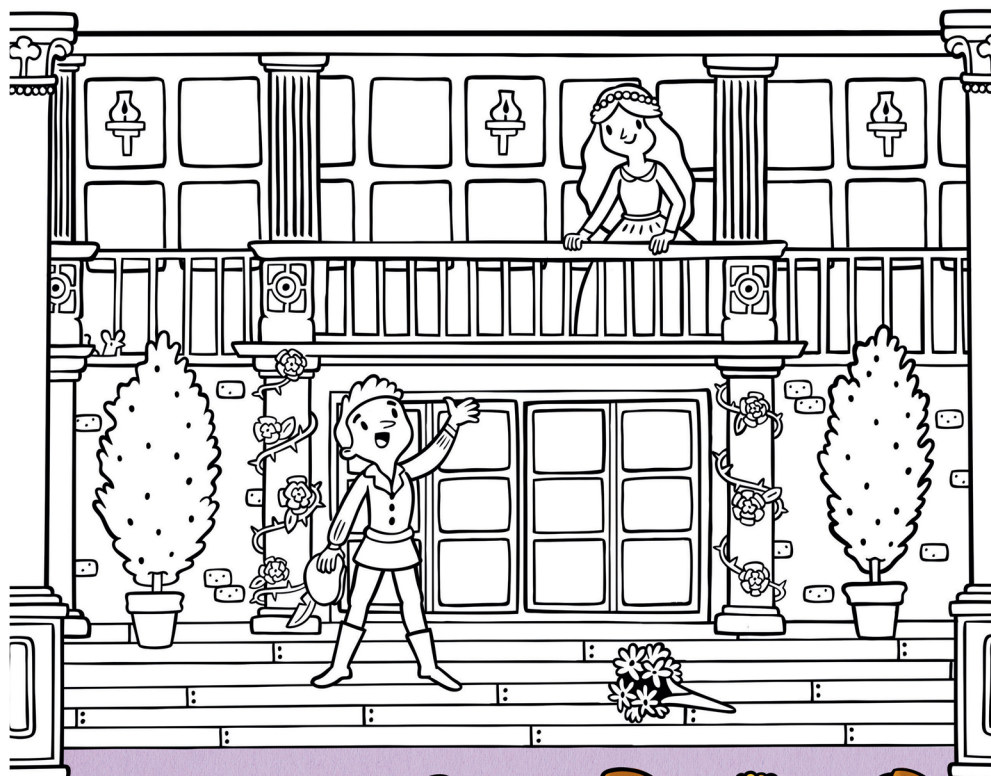
## THE GLOBE

William Shakespeare's plays were performed at the original Globe Theatre over 400 years ago.

### Romeo and Juliet

These actors are performing one of Shakespeare's most famous plays – Romeo and Juliet. Find and fill in all the things on the list with pens or pencils. Then, fill in the rest of the scene.

☆ 7 red roses ☆ A mouse ☆ 3 lamps ☆ 2 shrubs ☆ A feather



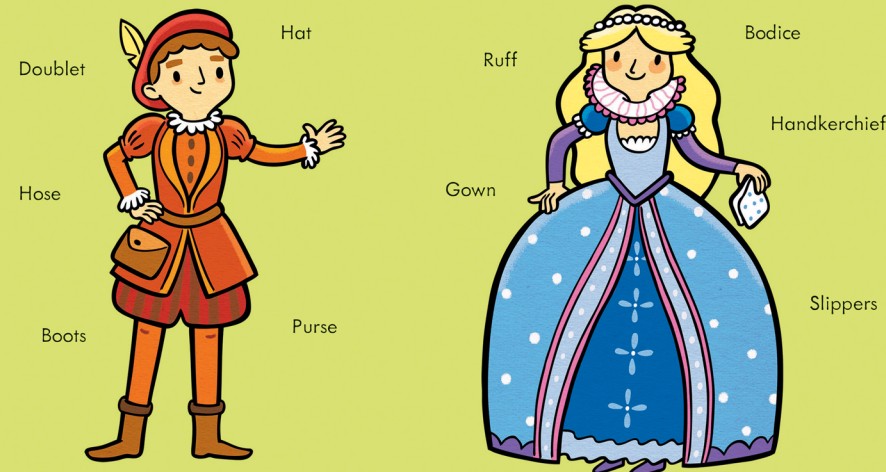
#### Did you know?

You can rent a cushion to sit on at the Globe, as the seats are wooden and very hard.



## Dressing up

The actors at the Globe often wear traditional clothes from Shakespeare's time when they perform. Can you match up the labels with the items of clothing? Draw lines between them.



## Workshop

These school children are being taught how to perform some of Shakespeare's most famous lines. Can you figure out what they're saying?

Ahorse!ahorse!Mykingdomforahorse!



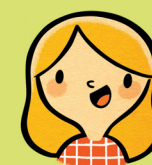
(Add in the spaces.)

Question the is that be: to  
not or be to



(Reverse the order  
of the words.)

Dorl, thaw soolt ehest  
sortalm eb!



(Swap the first and last  
letter of each word.)

.....

.....

.....