

# SATURDAY ACTIVITIES

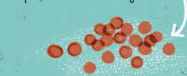
## GROW SEEDS

Plant your own miniature garden and watch it grow.

### 1 FIRST, FIND SEEDS

You can buy seeds, but you might be able to find things to grow in the kitchen, too.

Whole lentils (split lentils won't grow)



Popcorn kernels



Sunflower seeds



Pumpkin seeds



Coriander seeds



Cumin seeds



Fennel seeds



A garlic clove isn't technically a seed, but each clove can grow into a garlic plant.



Pick out seeds from apples, lemons and tomatoes.



Leave these types of seeds to dry out at room temperature before you plant them.

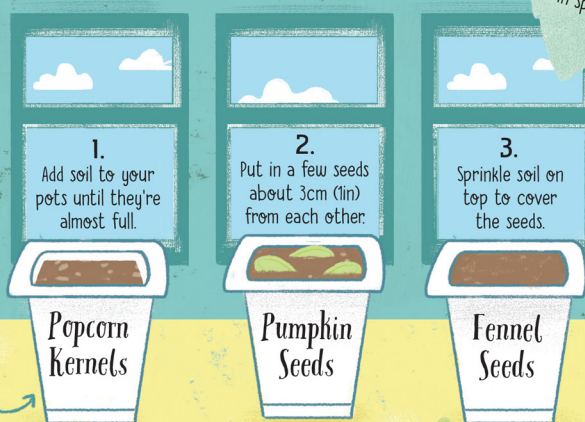
Most plants grow best when they're planted in spring.

### 2 THEN PLANT THEM...

#### YOU'LL NEED

- seeds
- soil
- felt-tip marker
- pots for planting in - empty yogurt containers work well

Write what you've planted on the pot.



Put the pots on a sunny windowsill or in a sheltered spot outside. Water them a little each day.

### 3 ...AND TEND THEM

It can take several days or weeks for shoots to appear - and some seeds never grow.

A young shoot from a seed is called a plumule.

What grows and what doesn't? Keep a record in a notebook.



Pouring water on plants can damage delicate shoots. Drip water onto them from your fingers instead.

Talk to your seedlings - some research has found that talking to plants can help them grow faster.

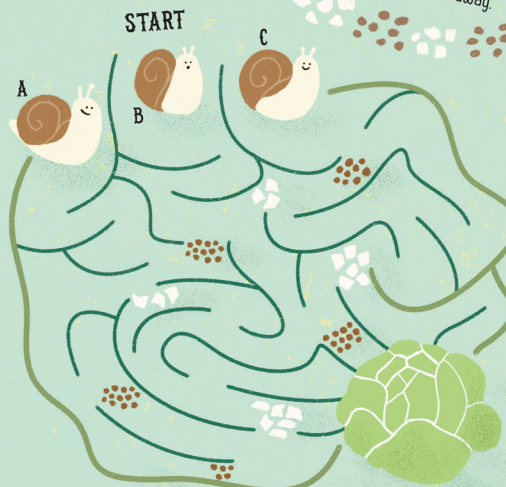
Plants don't grow well if they're crowded. Once your plants are about 5cm (2in) tall, you may need to move them into bigger pots - or plant them in the ground.

## PEST CONTROL

Outdoors, snails, slugs and bugs can be a problem for plants.

### SNAIL MAZE

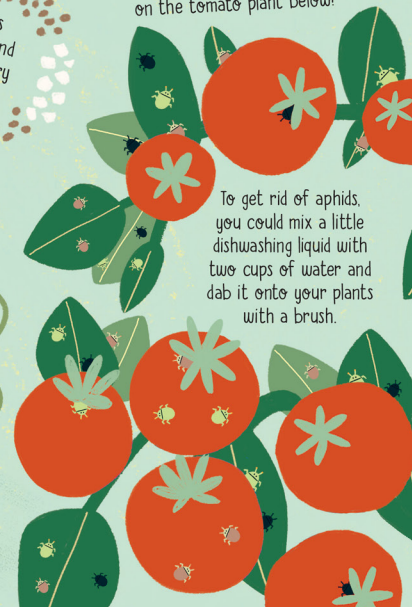
Which snail can make it to the lettuce without crossing any egg shells or coffee?



Sprinkle coffee grounds or broken egg shells around a plant to help keep hungry slugs and snails away.

### SPOT APHIDS

Aphids are little insects that feed on plants. They can be green, brown or black. How many aphids can you find on the tomato plant below?



To get rid of aphids, you could mix a little dishwashing liquid with two cups of water and dab it onto your plants with a brush.