

Create a leaf art gallery by making rubbings, then cutting them out and sticking them in the frames on the opposite page.

1. Collect leaves

You can use fresh or dry leaves. Try to find a range of shapes and sizes.

2. Choose one

Select a leaf and place it **BOTTOM SIDE UP** on a table - the side where you can see the lines on the leaf most clearly.

3. Sketch over the top

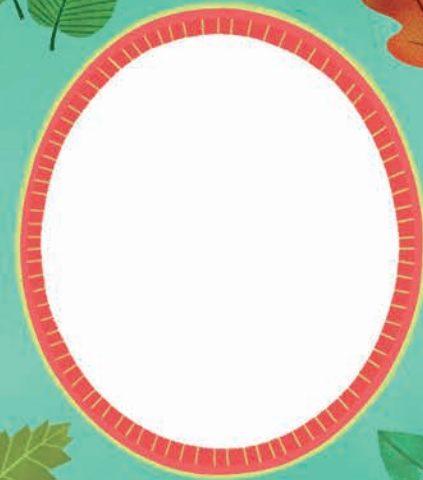
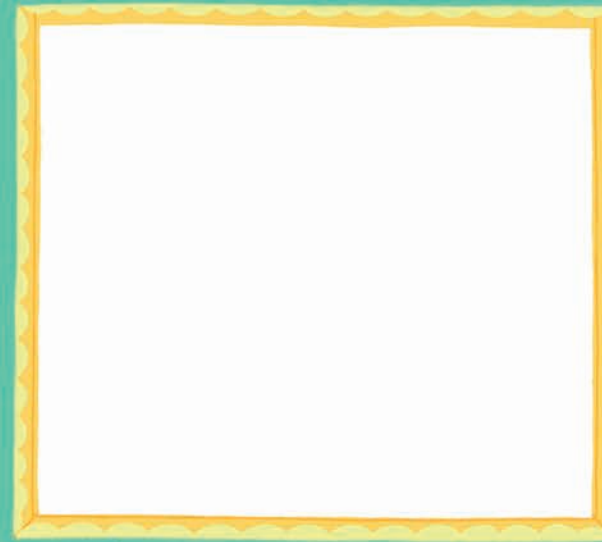
Put a thin piece of paper over the top, and rub all over the surface of the leaf with a crayon or pencil.



The lines that appear are **VEINS**. They are little tubes that carry water and nutrients to every part of the growing leaf.



Now cut out your rubbings and stick them in these frames.

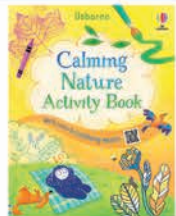
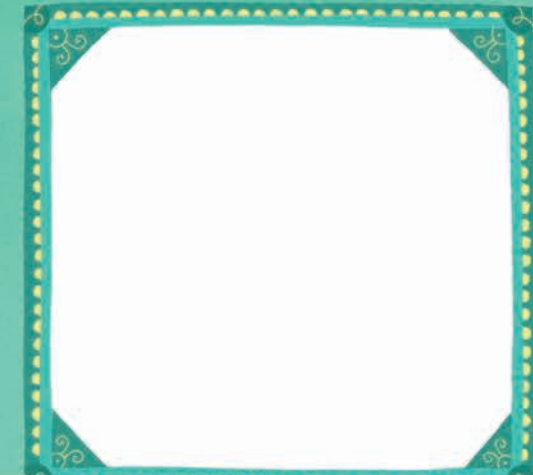


Look for leaves with different shapes and textures.

Shade some harder and some softer.



Try using different crayons or pencils.



Usborne Activities

Discover more in **Calming Nature Activity Book**. Share your activities with us [#UsborneActivities](https://www.usborne.com/activities).

Illustrations by Heloise Mab, Ada Crowe
Copyright © Usborne Publishing Limited, 2024.

