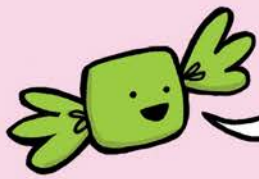


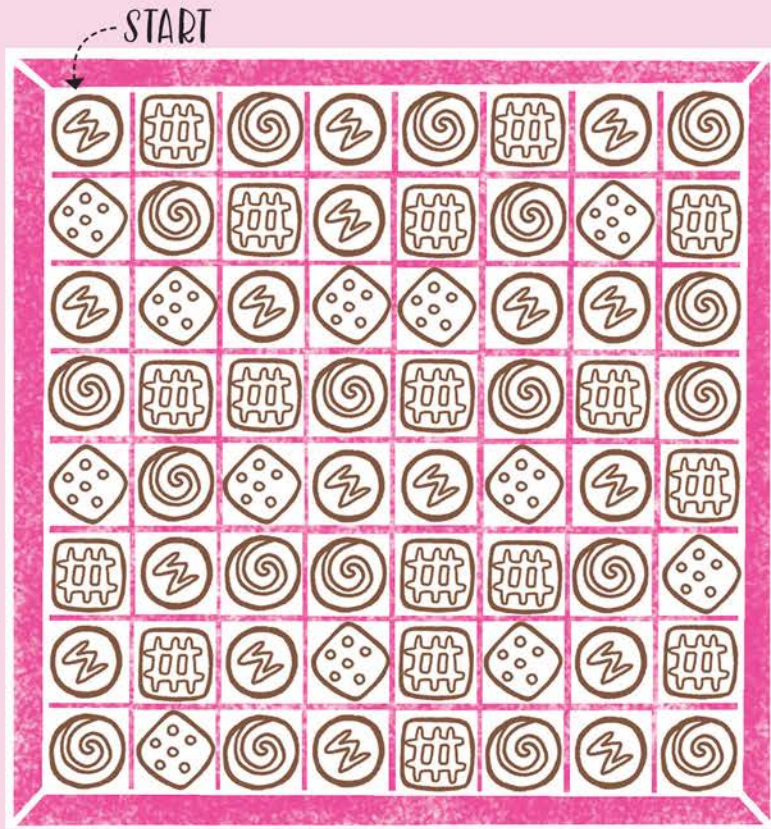
CHOCOLATE!

Chocolate box puzzle

'Eat' your way across this box, following the sequence below. You can go up or down, left or right, but not diagonally, and you have to finish in the bottom right corner. You can only 'eat' each chocolate in the box once!



When you've finished the puzzle, you could fill it in, too...



Chocolate conundrum

Draw lines to link up the pairs of chocolates that are the same, and find one that doesn't have a pair.



Mmmm... milkshake

You will need:



Beat the ice cream into the milk, until the milkshake is all smooth and frothy.

Drink me now!

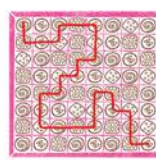


Usborne Activities

Scan the QR code to discover more activities for kids.



CHOCOLATE CONUNDRUM



CHOCOLATE BOX PUZZLE

