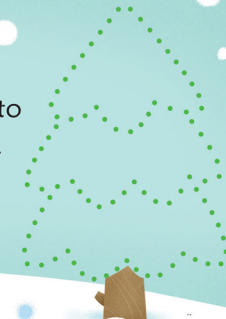


SATURDAY ACTIVITIES

Slipping and sliding

Draw a line from each rabbit to one that looks just like it.

Draw over the dots to show 2 more trees.

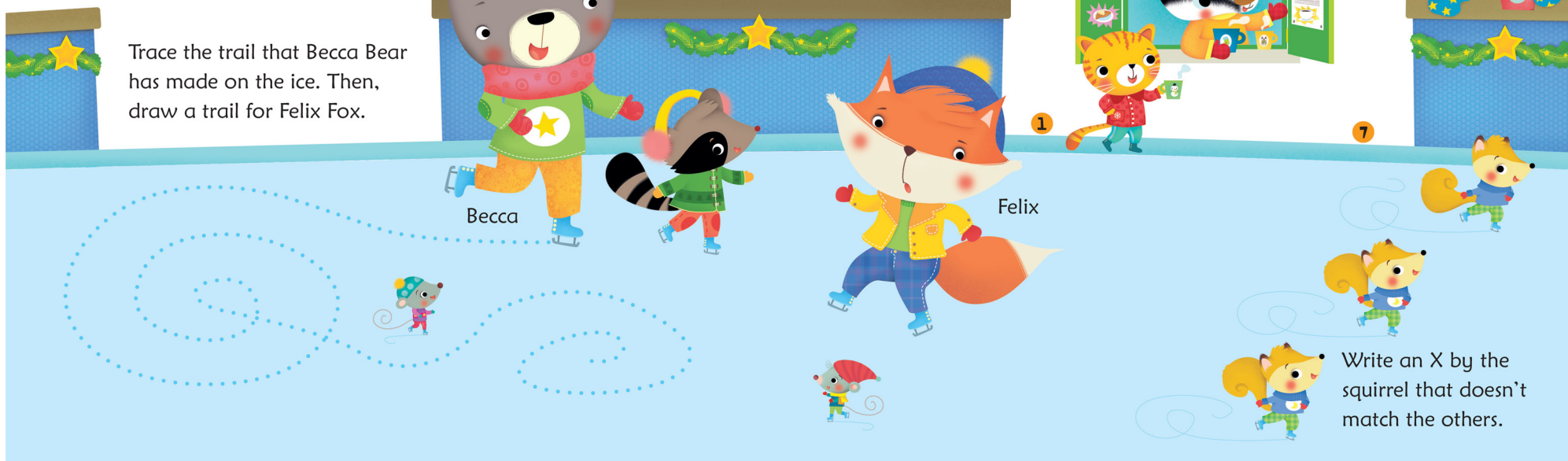


Find and circle 2 skating mice.

Join the dots to finish Billy Badger's café.

Trace the trail that Becca Bear has made on the ice. Then, draw a trail for Felix Fox.

Billy's
Snack Shack



Write an X by the squirrel that doesn't match the others.