

SATURDAY ACTIVITIES

MUSEUMS

Here are six fascinating museums you might visit in London...

Natural History Museum

This museum has collected lots of different species of animals, birds and insects. Can you find two identical butterflies in this display? Draw around them.



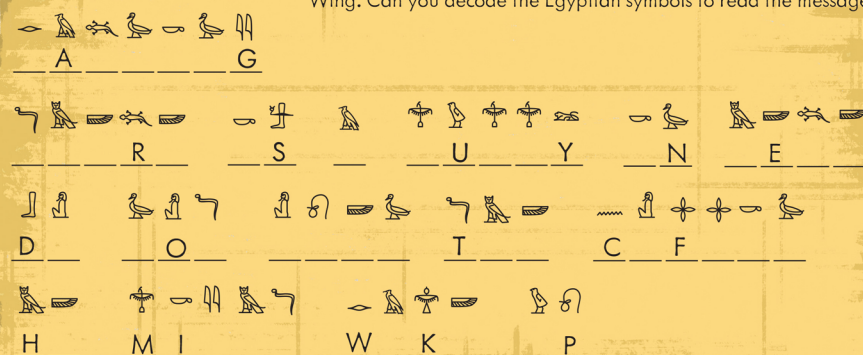
The V & A

The Victoria and Albert Museum contains amazing art and designs. Can you find a path from the top of this hanging to the bottom? Then, fill in the picture.



The British Museum

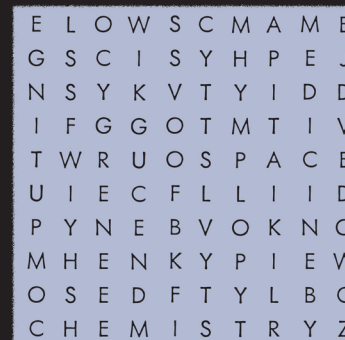
Fascinating objects from all over the world are on display at the British Museum. One of the biggest exhibitions is in the Egyptian Wing. Can you decode the Egyptian symbols to read the message?



Science Museum

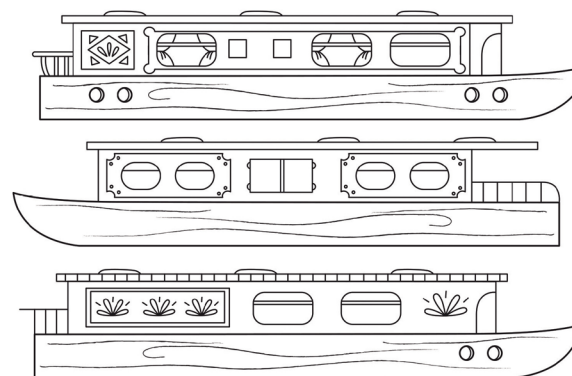
There are lots of hands-on science activities to do at this museum. Find these science topics in the wordsearch – they could be going up, down, across, diagonally or even backwards.

BIOLOGY
CHEMISTRY
COMPUTING
ENERGY
MEDICINE
PHYSICS
SPACE



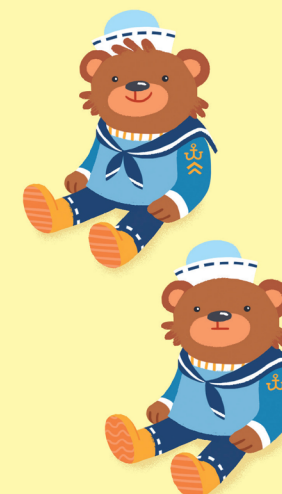
London Canal Museum

Near the Regent's Canal, there's a museum which displays canal boats, some of which you can travel on. Many are brightly painted. Fill in these boats with pens or pencils.



Museum of Childhood

This museum is home to a huge collection of toys. Can you spot five differences between these two bears? Draw around them.



Did you know?

People used to move their canal boats through tunnels by pushing against the walls with their legs. This was called 'legging'.

